

Extremity Trauma

History

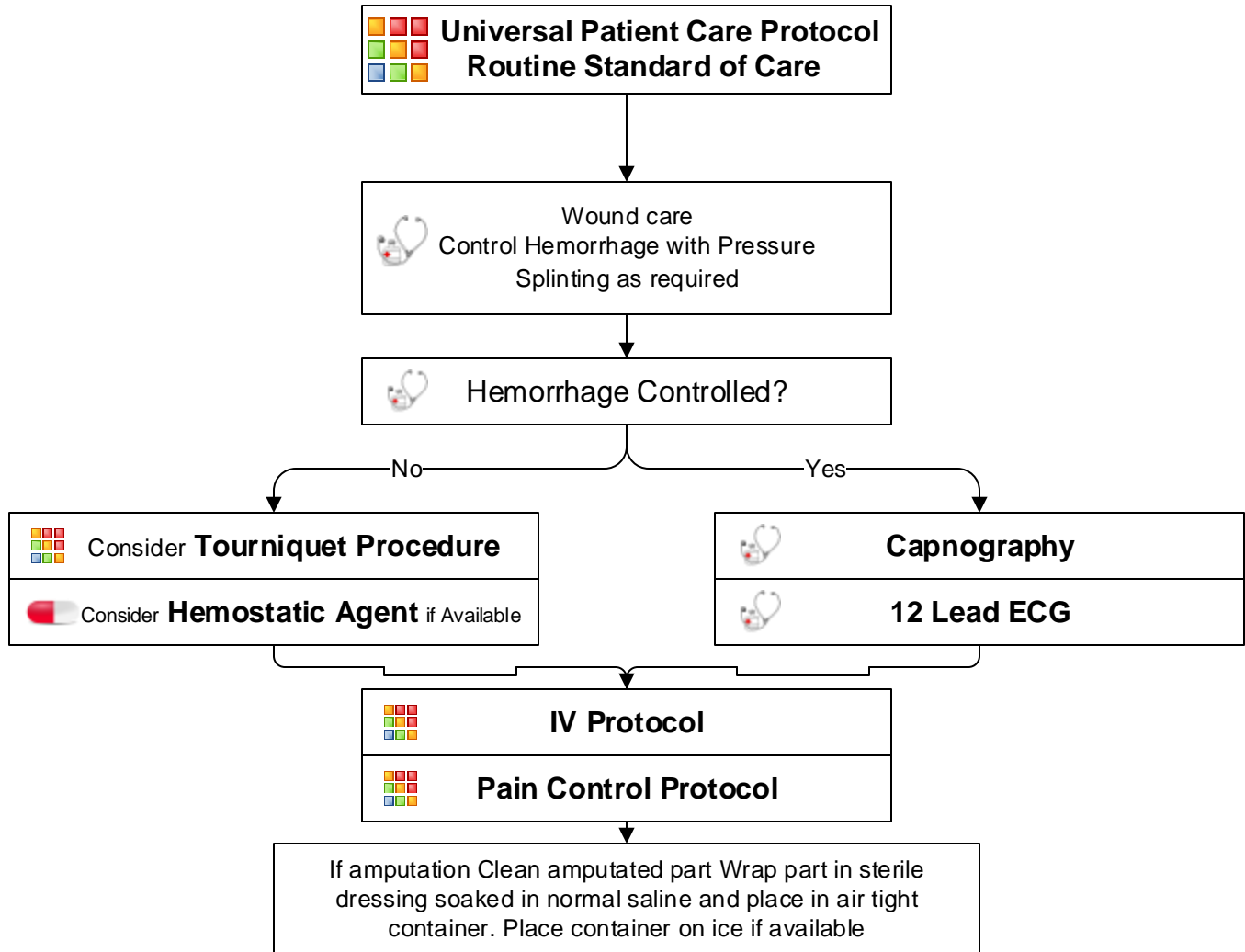
- Type of injury
- Mechanism: crush / penetrating / amputation
- Time of injury
- Open vs. closed wound / fracture
- Wound contamination
- Medical history
- Medications

Signs and Symptoms

- Pain, swelling
- Deformity
- Altered sensation / motor function
- Diminished pulse / capillary refill
- Decreased extremity temperature

Differential

- Abrasion
- Contusion
- Laceration
- Sprain
- Dislocation
- Fracture
- Amputation



Trauma Protocols

Pearls

- Recommended Exam: Mental Status, Extremity, Neuro
- Peripheral neurovascular status is important
- In amputations, time is critical. Transport and notify medical control immediately, so that the appropriate destination can be determined.
- Hip dislocations and knee and elbow fracture / dislocations have a high incidence of vascular compromise.
- Urgently transport any injury with vascular compromise.
- Blood loss may be concealed or not apparent with extremity injuries.
- Lacerations must be evaluated for repair within 6 hours from the time of injury.